



C A B I N



apreamare

GOZZO

38

C A B I N

A journey into the
Mediterranean yachting culture

GOZZO 38 CABIN

**Cruising all-year-round
in grand style**













GOZZO 38 CABIN

Your exclusive suite
with a panoramic view













Data sheet / Scheda Tecnica

PRELIMINARY

GOZZO 38 CABIN

1 PROPULSION

2 X VOLVOPENTA D4-270hp DPI - stern drive

2 X VOLVOPENTA D4-320hp SH - shaft line

2 SPEED (knots)

	VP D4 270 DPI		VP D4 320 SH
Maximum speed	30	knots	28
Cruising speed	25	knots	23

3 RANGE

	VP D4 270 DPI		VP D4 320 SH
Maximum speed	217	nautical miles	144
Cruising speed	208	nautical miles	202

4 MAIN DIMENSIONS

Length overall (LOA)	11,45	metri/feet	37 ft. 7 in.
Hull/homologation length	9,95	metri/feet	32 ft. 8 in.
Waterline length	9,64	metri/feet	31 ft. 8 in.
Maximum beam	3,70	metri/feet	12 ft. 2 in.
Draft	0,94	metri/feet	3 ft. 1 in.
Displacement unladen	8,0	ton./lb.	17637
Displacement laden	10,0	ton./lb.	22046
Max. number of persons on board	14		
Navigation/homologation category CE	B		

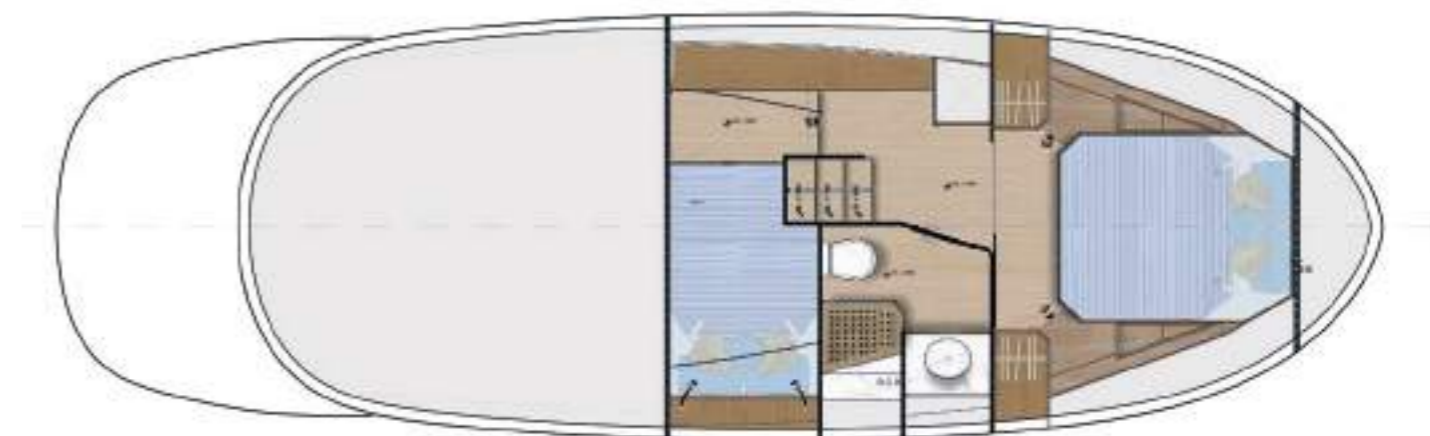
5 ADDITIONAL DATA

Variable geometry hull type with support skids

Maximum height for transportation	4,00	m.	13 ft. 1 in.
Fuel tank capacity	700	lt./US gals.	185
Fresh water tank capacity	200	lt./US gals.	53
Black water tank capacity	50	lt./US gals.	13

*All data's are merely indicative, refer to a standard model, and therefore have no contractual value. Apremare, in the light of a continuous improvement, reserves the right to change and/or update them at any time and without prior notice.

* I dati tecnici, prestazionali e di autonomia sono meramente indicativi e riferiti ad un modello standard, e non hanno pertanto alcun valore contrattuale. Apremare, in ottica di continuo miglioramento, si riserva di variarli e/o aggiornarli in qualunque momento e senza preavviso.





INTERIOR/EXTERIOR DESIGN
Marco Casali - Too Design

NAVAL ARCHITECTURE
Umberto Tagliavini
Marine Design & Service

PHOTOS
Blue Passion



apreamare

MEDITERRANEAN YACHTING CULTURE

Apreamare Yachts

Via Terragneta, 72 - 80058 Torre Annunziata (NA)

Tel: +39 081 537 8411

www.apreamare.it